

1

Lever lateral-Spring

3/2

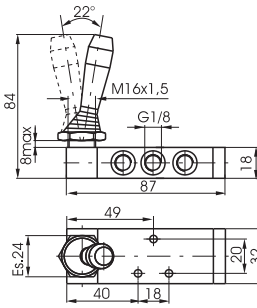
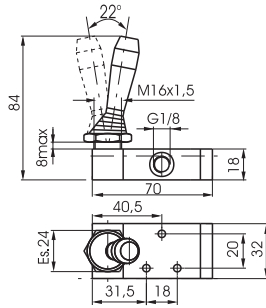
Ordering code

228.T.9.1/C

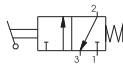
- TYPE
T 32 = 3 ways
 52 = 5 ways
 BUTTON COLOR
C 1 = Red
 2 = Black
 3 = Green

5/2

Lever lateral-Spring



Weight gr. 140



Weight gr. 160

Operational characteristics	Fluid	Max working pressure	Operating Temperature		Flow rate at 6 bar with $\Delta p=1$	Orifice size	Working port size
	Filtered air, with or without lubrication	10 bar	Min. -5°C	Max. +70°C	540 NI/min	mm 6	G 1/8"

Lever lateral 2 positions

3/2

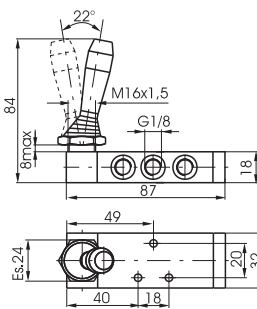
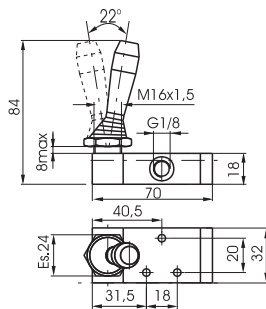
Ordering code

228.T.9/C

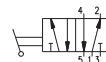
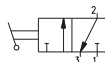
- TYPE
T 32 = 3 ways
 52 = 5 ways
 BUTTON COLOR
C 1 = Red
 2 = Black
 3 = Green

5/2

Lever lateral 2 positions



Weight gr. 140



Weight gr. 160

Operational characteristics	Fluid	Max working pressure	Operating Temperature		Flow rate at 6 bar with $\Delta p=1$	Orifice size	Working port size
	Filtered air, with or without lubrication	10 bar	Min. -5°C	Max. +70°C	540 NI/min	mm 6	G 1/8"

Pedal aluminium 2 positions

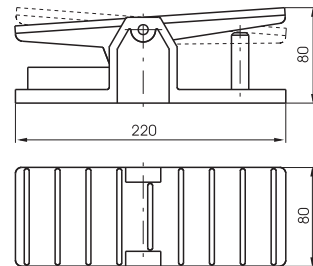
3/2

5/2

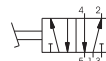
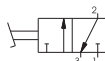
Ordering code

228.T.10

- TYPE
T 32 = 3 ways
 52 = 5 ways



Weight gr. 790 (3/2)
 Weight gr. 810 (5/2)



Operational characteristics	Fluid	Max working pressure	Operating Temperature		Flow rate at 6 bar with $\Delta p=1$	Orifice size	Working port size
	Filtered air, with or without lubrication	10 bar	Min. -5°C	Max. +70°C	540 NI/min	mm 6	G 1/8"