

1

Lever roller ball bearing-Spring

3/2

Ordering code

228.1.2.1/1

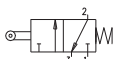
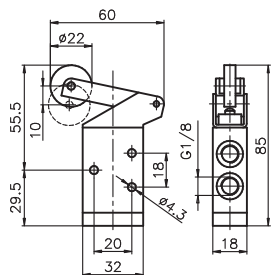
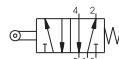
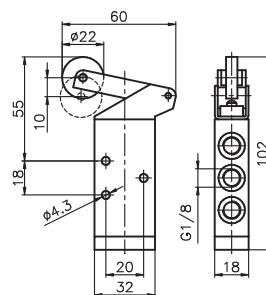
TYPE

32 = 3 ways

52 = 5 ways

5/2

Lever roller ball bearing-Spring

Weight gr. 130
Operating force 15 NWeight gr. 150
Operating force 15 N

Operational characteristics

Operational characteristics	Fluid	Max working pressure	Operating Temperature		Flow rate at 6 bar with $\Delta p=1$	Orifice size	Working port size
	Filtered air, with or without lubrication	10 bar	Min. -5°C	Max. +70°C	540 Nl/min	mm 6	G 1/8"

Lever button-Spring

3/2

Ordering code

228.1.2.6/C

TYPE

32 = 3 ways

52 = 5 ways

BUTTON COLOR

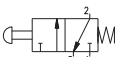
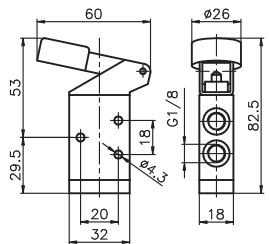
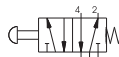
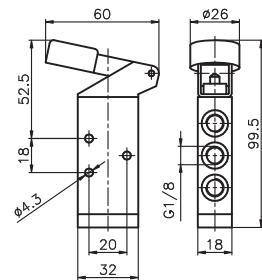
1 = Red

2 = Black

3 = Green

5/2

Lever button-Spring

Weight gr. 120
Operating force 15 NWeight gr. 120
Operating force 15 N

Operational characteristics

Operational characteristics	Fluid	Max working pressure	Operating Temperature		Flow rate at 6 bar with $\Delta p=1$	Orifice size	Working port size
	Filtered air, with or without lubrication	10 bar	Min. -5°C	Max. +70°C	540 Nl/min	mm 6	G 1/8"

Switch lateral 2 positions

3/2

Ordering code

228.1.27

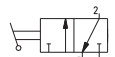
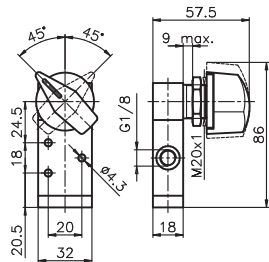
TYPE

32 = 3 ways

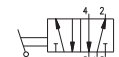
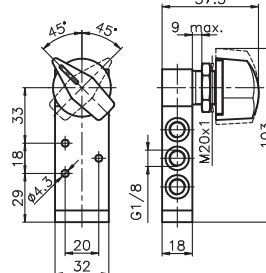
52 = 5 ways

5/2

Switch lateral 2 positions



Weight gr. 190



Weight gr. 210

Operational characteristics

Operational characteristics	Fluid	Max working pressure	Operating Temperature		Flow rate at 6 bar with $\Delta p=1$	Orifice size	Working port size
	Filtered air, with or without lubrication	10 bar	Min. -5°C	Max. +70°C	540 Nl/min	mm 6	G 1/8"