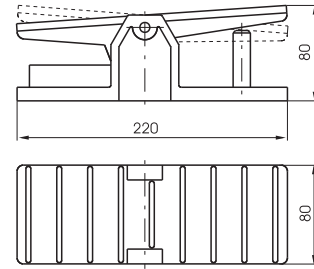
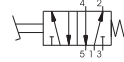
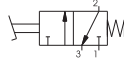


Pedal aluminium-Spring

Ordering code
228.10.1
TYPE
T 32 = 3 ways
52 = 5 ways



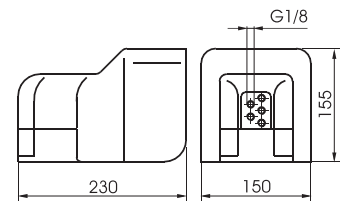
Weight gr. 790 (3/2)
Weight gr. 810 (5/2)



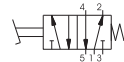
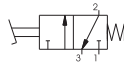
Operational characteristics	Fluid	Max working pressure	Operating Temperature		Flow rate at 6 bar with $\Delta p=1$	Orifice size	Working port size
	Filtered air, with or without lubrication	10 bar	Min. -5°C	Max. +70°C	540 NI/min	mm 6	G 1/8"

Pedal protected-Spring

Ordering code
228.10.V
TYPE
T 32 = 3 ways
52 = 5 ways
VERSION
V 1/1 = Standard version
2/1 = without safety device



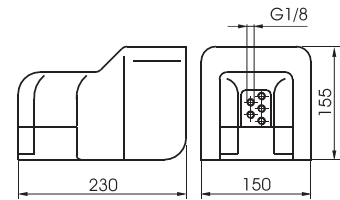
Weight gr. 1.120



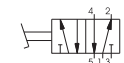
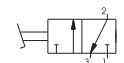
Operational characteristics	Fluid	Max working pressure	Operating Temperature		Flow rate at 6 bar with $\Delta p=1$	Orifice size	Working port size
	Filtered air, with or without lubrication	10 bar	Min. -5°C	Max. +70°C	540 NI/min	mm 6	G 1/8"

Pedal protected 2 positions

Ordering code
228.10/1
TYPE
T 32 = 3 ways
52 = 5 ways



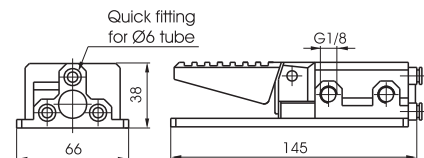
Weight gr. 1.120



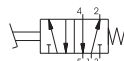
Operational characteristics	Fluid	Max working pressure	Operating Temperature		Flow rate at 6 bar with $\Delta p=1$	Orifice size	Working port size
	Filtered air, with or without lubrication	10 bar	Min. -5°C	Max. +70°C	540 NI/min	mm 6	G 1/8"

Pedal plastic miniaturized-Spring

Ordering code
228.52.10.F
FUNCTION
F 1P = Standard version
1PX = Stainless steel spool



Weight gr. 230



Operational characteristics	Fluid	Max working pressure	Operating Temperature		Flow rate at 6 bar with $\Delta p=1$	Orifice size	Working port size
	Filtered air, with or without lubrication	10 bar	Min. -5°C	Max. +70°C	540 NI/min	mm 6	G 1/8"