

Hygienic[™]
S E L E C T

Hygienic Fittings, Unions and Tube.

Contents

HYGIENIC FITTINGS

1. 90° and 45° Bends
2. 90° Bends in 1, 2 and 3 x the Tube Diameter
3. Tees and Crosses
4. Concentric & Eccentric Reducing Cones
5. Y Pieces and Swept Tees
6. Hose Tails and OD End caps
7. Spray Balls

HYGIENIC UNIONS

1. RJT Unions
2. Clamp Unions
3. IDF Unions
4. SMS Unions
5. DIN Unions

HYGIENIC TUBE

1. 316 Dull Polished
2. 316 De-Scaled

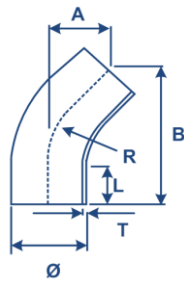
NOTE

The dimensions listed are for guidance only. If dimensions are imperative please contact our technical department.

Hygienic / Sanitary Fittings

90° and 45° Bends

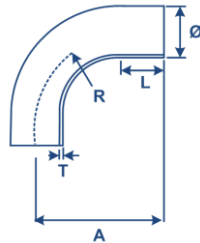
45° Bend
SKU: HF1904



45° Bend Available in 316 grade. Weld bead rolled for crevice free ID Supplied polished.

Dimension	1/2"	3/4"	1"	1.25"	1.5"	2"	2 1/2"	3"	4"
QØ	12.7	19.05	25.4	31.8	38.1	50.8	63.5	76.1	101.6
T	1.6	1.6	1.6	1.5	1.6	1.6	1.6	1.6	2
R	19	28	38	48	57	76.5	95.3	114	153
A	18	21.8	21.4	30.8	29.2	41	53.8	63.8	86.4
B	45	55	51.5	77	70.5	100	130	154	209
L	15	20	14.6	22	17.7	27	36.7	42.9	59.2

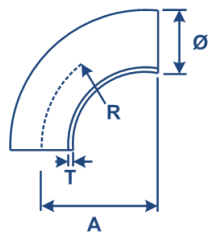
90° ISO Bend
SKU: HF1903



90° ISO Bend Available in 316 grade. Weld bead rolled for crevice free ID Supplied polished.

Dimension	1/2"	3/4"	1"	1.25"	1.5"	2"	2 1/2"	3"	4"
Ø	12.7	19.05	25.4	31.8	38.1	50.8	63.5	76.1	101.6
T	1.6	1.6	1.6	1.6	1.6	1.6	1.6	1.6	2
R	26	29	37.5	48	57	76.5	95.3	114	153
A	40	50	65	80	85	110	135	155	195
L	12.5	20	27.5	33.5	28	33.5	39.7	40.8	42.5

90° BS Bend
SKU: HF1902



90° Bend BS Pattern Similar to the ISO pattern bend, but with a shorter "straight" centre line radius of 1.5 times

Dimension	1"	1.5"	2"	2 1/2"	3"	4"
Ø	25.4	38.1	50.8	63.5	76.1	101.6
T	1.6	1.6	1.6	1.6	1.6	2
R	37.5	57	76.5	95.3	114	153
A	44	64	89	114	134	174

Our 90° & 45° bends are available in 316 stainless steel and supplied as standard with a dull polished external finish. They generally comply to BS4825. Bead rolled internals, that provide a smooth internal finish which eliminates any cracks or crevices.

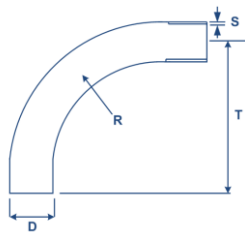
NOTE

The dimensions listed are for guidance only. If dimensions are imperative please contact our technical department.

Hygienic / Sanitary Fittings

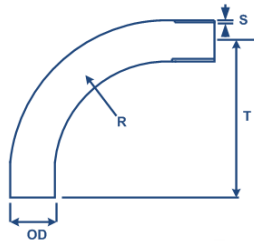
90° Bends in 1, 2 and 3 x the Tube Diameter.

90° x 3 Dia Bend
SKU: HF1901



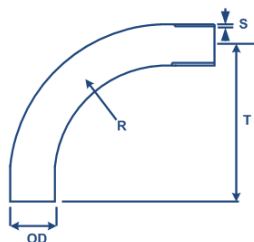
90° Bend bend with a radius of 3x the tube diameter. Longer bend than 2 x D. Stocked from 1" OD - 3" OD					
Dimension	1"	1.5"	2"	2 1/2"	3"
D	25.4	38.1	50.8	63.5	76.1
S	1.5	1.5	1.5	1.5	1.6
R	75	115	150	180	215
T	115	140	225	230	250

90° x 2 Dia Bend
SKU: HF1939



2 x 90° bend with a radius of 2 x the tube diameter. - Longer bend than 1 x D. Stocked from 1.5" OD - 4" OD					
Dimension	1.5"	2"	2 1/2"	3"	4"
OD	38.1	50.8	63.5	76.1	101.6
T	1.6	1.6	1.6	1.6	2
R	76	101	127	152	203
A	105	130	160	200	203

90° x 1 Dia Bend
SKU: HF1900



1 x 90° bend with a radius of 1 x the tube diameter. Tighter bend than ISO & BS. Stocked from 1" OD - 4" OD							
Dimension	1"	1.25"	1.5"	2"	2 1/2"	3"	4"
OD	25.4	31.8	38.1	50.8	63.5	76.1	101.6
T	1.5	1.5	1.5	1.5	1.5	1.6	2
R	25	32	38	51	63	76	110
S	55	66	70	82	105	110	150

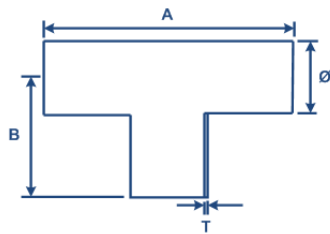
Our range of 90° bends are available as 1 x Dia, 2 x Dia & 3 x Dia bends from stock.

NOTE

The dimensions listed are for guidance only. If dimensions are imperative please contact our technical department.

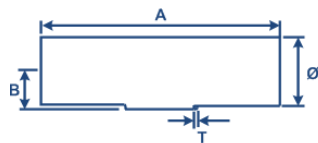
Hygienic / Sanitary Fittings Tees and Crosses

Equal Full Tee
SKU: HF1905



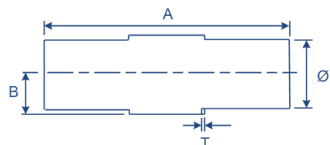
Full Equal T with equal lengths from the centre to each end face & branch. Stocked from 1/2" OD - 4" OD.								
Dimension	1/2"	3/4"	1"	1.5"	2"	2 1/2"	3"	4"
A	58	76	88	128	178	228	268	348
T	1.6	1.6	1.6	1.6	1.6	1.6	1.6	2
Ø	12.7	19.05	25.4	38.1	50.8	63.5	76.1	101.6
B	29	38	64	64	89	114	134	174

Pulled Tee
SKU: HF1937



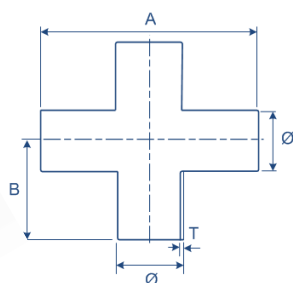
Pulled Tee polished and descaled. Stocked from 1" OD - 4" OD.						
Dimension	1"	1.5"	2"	2 1/2"	3"	4"
A	88	128	178	228	268	348
T	1.5	1.5	1.5	1.5	1.5	2
B	13.8	19.9	27.6	34	40.9	54.7
Ø	25.4	38.1	50.8	63.5	76.1	101.6

Pulled Cross
SKU: HF1938



Available in 316 grade stainless steel Stocked from 1" OD - 4" OD						
Dimension	1"	1.5"	2"	2 1/2"	3"	4"
Ø	25.4	38.1	50.8	63.5	76.1	101.6
T	1.5	1.6	1.6	1.6	1.6	2
A	88	128	178	228	268	348
B	13.8	19.9	27.6	34	40.9	54.7

Equal Cross
SKU: HF1940



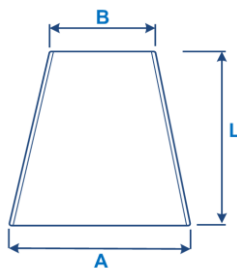
Equal lengths from the centre to each end face and branches. Stocked from 1" OD - 4" OD						
Dimension	1"	1.5"	2"	2 1/2"	3"	4"
Ø	25.4	38.1	50.8	63.5	76.1	101.6
T	1.5	1.6	1.6	1.6	1.6	2
A	88	128	178	228	268	348
B	13.8	19.9	27.6	34	40.9	54.7

NOTE

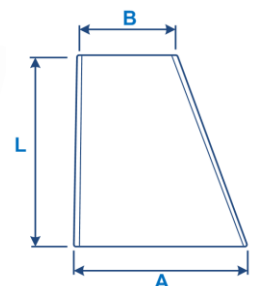
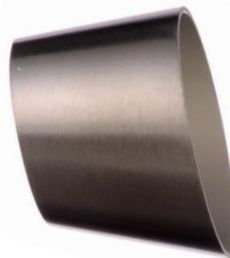
The dimensions listed are for guidance only. If dimensions are imperative please contact our technical department.

Hygienic / Sanitary Fittings Concentric & Eccentric Reducing Cones

Concentric Cone SKU: HF1907



Reducing Cone SKU: HF1936



Concentric Cone fully hygienic in 316 St. St.			
Size	A	B	L
3/4" x 1/2"	19.05	12.7	14
1" x 1/2"	25.4	12.7	20
1" x 3/4"	25.4	19.05	13
1.25" x 1/2"	31.75	12.7	32
1.25" x 3/4"	31.75	19.05	30
1.25" x 1"	31.75	25.4	19
1.5" x 1/2"	38.1	12.7	44
1.5" x 3/4"	38.1	19.05	44
1.5" x 1"	38.1	25.4	28
1.5" x 1.25"	38.1	31.75	19
2" x 1/2"	50.8	12.7	61
2" x 3/4"	50.8	19.05	66
2" x 1"	50.8	25.4	53
2" x 1.5"	50.8	38.1	38
2.5" x 1"	63.5	25.4	80
2.5" x 1.5"	63.5	38.1	60
2.5" x 2"	63.5	50.8	39
3" x 1"	76.2	25.4	106
3" x 1.5"	76.2	38.1	81
3" x 2"	76.2	50.8	54
3" x 2.5"	76.2	63.5	40
4" x 1"	101.6	25.4	160
4" x 1.5"	101.6	38.1	133
4" x 2"	101.6	50.8	107
4" x 2.5"	101.6	63.5	78
4" x 3"	101.6	76.2	53

Fully Hygienic in 316 Concentric and Eccentric, available in both polished & de-scaled finishes (other finishes can be supplied) Eccentric in polished finish only (if required, de-scaled can be supplied on a short lead time) Metric Cones also available.

Eccentric Reducing Cone fully hygienic in 316 St. St.			
Size	A	B	L
3/4" x 1/2"	19.05	12.7	15
1" x 1/2"	25.4	12.7	25
1" x 3/4"	25.4	19.05	15
1.25" x 3/4"	31.75	19.05	28
1.25" x 1"	31.75	25.4	17
1.5" x 1/2"	38.1	12.7	42
1.5" x 3/4"	38.1	19.05	44
1.5" x 1"	38.1	25.4	36
1.5" x 1.25"	38.1	31.75	19
2" x 1/2"	50.8	12.7	79
2" x 3/4"	50.8	19.05	68
2" x 1"	50.8	25.4	55
2" x 1.5"	50.8	38.1	34
2.5" x 1"	63.5	25.4	76
2.5" x 1.5"	63.5	38.1	65
2.5" x 2"	63.5	50.8	34
3" x 1"	76.2	25.4	101
3" x 1.5"	76.2	38.1	76
3" x 2"	76.2	50.8	66
3" x 2.5"	76.2	63.5	42
4" x 1"	101.6	25.4	156
4" x 1.5"	101.6	38.1	130
4" x 2"	101.6	50.8	100
4" x 2.5"	101.6	63.5	73
4" x 3"	101.6	76.2	72

NOTE

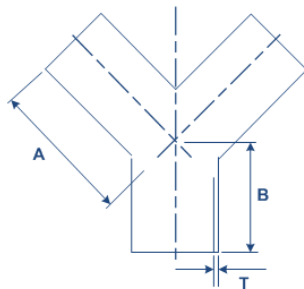
The dimensions listed are for guidance only. If dimensions are imperative please contact our technical department.

Hygienic / Sanitary Fittings Y Pieces and swept Tees

Supplied in a dull polished grade 316L
Stainless steel. Stocked from 1" - 4" OD.

- Fully Hygienic
- Test certificate on request

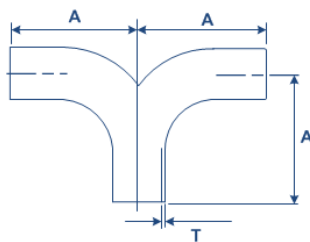
Y Piece Tee SKU: HF1941



Y Piece Tee polished and descaled. Stocked from 1" OD - 4" OD.

Dimension	1"	1.5"	2"	2 1/2"	3"	4"
A	44	64	89	114	134	174
T	1.5	1.5	1.5	1.5	1.5	2
B	22	31	44	58	67	85
∅	25.4	38.1	50.8	63.5	76.1	101.6

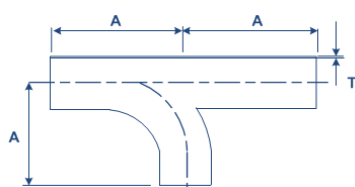
Seagull Tee SKU: HF1942



Seagull Tee polished and descaled. Stocked from 1" OD - 4" OD.

Dimension	1"	1.5"	2"	2 1/2"	3"	4"
A	65	85	110	135	155	195
T	1.5	1.5	1.5	1.5	1.5	2
∅	25.4	38.1	50.8	63.5	76.1	101.6

Swept Tee SKU: HF1943



Swept Tee polished and descaled. Stocked from 1" OD - 4" OD.

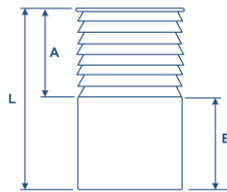
Dimension	1"	1.5"	2"	2 1/2"	3"	4"
A	65	85	110	135	155	195
T	1.5	1.5	1.5	1.5	1.5	2
∅	25.4	38.1	50.8	63.5	76.1	101.6

NOTE

The dimensions listed are for guidance only. If dimensions are imperative please contact our technical department.

Hygienic / Sanitary Fittings Hose Tails & OD End Caps

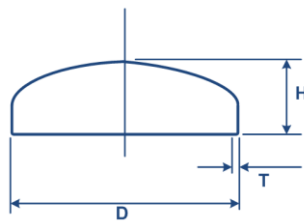
Hygienic hose Tail SKU: HF1935



316 Stainless steel from dairy tube									
Dimension	1/2"	3/4"	1"	1.25"	1.5"	2"	2 1/2"	3"	4"
A	25	25	50	50	50	50	50	85	85
B	25	25	50	50	50	50	50	65	85
L	50	50	100	100	100	100	100	150	150
Thickness	1.5	1.5	1.5	1.5	1.5	1.5	2	2	2

316 stainless steel tube – alternative ends can be supplied and welded –
Clamp,RJT,DIN,SMS or IDF

OD End Cap SKU: HF1945



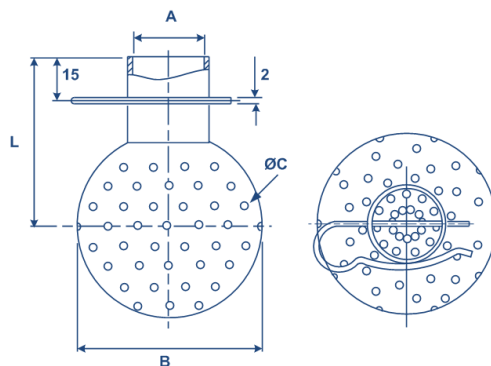
316 Stainless steel						
Dimension	1"	1.5"	2"	2 1/2"	3"	4"
D	25	38	51	63.5	76.1	101.6
H	12	15	19	19	27	24.5
T	1.6	1.6	1.6	1.6	1.6	2

NOTE
The dimensions listed are for guidance only. If dimensions are imperative please contact our technical department.

OD end caps are descaled finish in 316. Polished and metric can be supplied on a short lead time.

Hygienic / Sanitary Fittings Spray Ball

Hygienic Spray Ball SKU: HF1946



316 Stainless steel with Clip Fixing

Dimension	A	B	C	L	Height	Angle	spray circle dia (Mtrs)	Flow rate M ³ /hr@1 bar
3/4"	19.05	40	1.6	40	45	360°	0.8-1.5	2.8
							1.0-2.0	5.1
1"	25.4	64	2.5	58	85	360°	1.5-2.5	3
							1.8-2.5	7
							2.0-3.0	9.8
							2.5-3.5	12.8
1.5"	38.1	64	2.5	58	85	360°	3.0-4.0	15.3
							2.6	18.8

The Spray Ball is a low cost maintenance option for the internal cleaning of vessels. Available in a 360 degree spray pattern, they are available to suit ¾", 1" and 1.1/2" od tube inlets. They are retained on the tube via a simple 'C' spring clip.

- ¾", 1", 1.5" OD tube Inlet
- 360deg Spray pattern
- Grade 316 stainless steel

NOTE

The dimensions listed are for guidance only. If dimensions are imperative please contact our technical department.

Hygienic / Sanitary Fittings Unions

Hygienic fittings are commonly used in the food, brewery, dairy and pharmaceutical industries. They are robust fittings, ideal for pipe work which has to be dismantled for cleaning and sterilising. Our extensive range includes RJT, IDF, DIN and SMS fittings as well as a comprehensive range of clamp fittings. We can also supply custom fabricated **hygienic fittings** to your specification.

RJT unions (Ring Joint Type) are our most common union and are usually referred to as a standard union. They comprise of an o-ring style gasket seal that has a small crevice where the liner and male union overlap. RJT unions are usually used where frequently dismantled sections of pipe work are undertaken.

Tri-clamp unions offer a smooth and non-contaminating internal pipe work joint for hygienic process and product manufacture.

IDF unions (International Dairy Federation) comprise of a smooth bore and is a crevice free design. These unions are suitable for CIP (clean in place).

SMS unions (Swedish Manufacturing Standard) come complete with a captive seal designed to provide a smooth, crevice-free internal bore.

DIN unions (Deutsche Industrial Norm) These unions are the German standard and are used in conjunction with German and other European equipment.

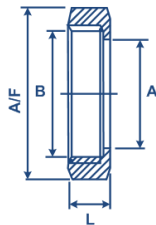
NOTE

The dimensions listed are for guidance only. If dimensions are imperative please contact our technical department.

Hygienic / Sanitary Fittings

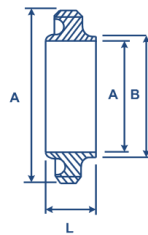
RJT Unions

SKU: HF1917



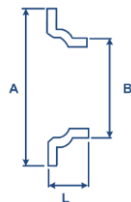
RJT HEXAGON NUT - 304 ST. ST.						
Dimension	1"	1.5"	2"	2 1/2"	3"	4"
A	33.45	46	58.67	71.4	84.1	109.7
T	42.26	54.96	67.92	80.62	93.32	118.72
A/F	50.8	65	79.4	92	104.8	130
L	22.2	22.2	22.2	22.2	22.2	22.2

SKU: HF1913



RJT WELD MALE - 316 ST. ST.						
Dimension	1"	1.5"	2"	2 1/2"	3"	4"
A	21.1	34.8	47.5	60.2	72.9	97.6
B	25.4	38.1	50.8	63.5	76.2	101.6
C	45.72	58.42	72.72	85.42	98.12	123.52
L	27	27	27	27	27	27

SKU: HF1909



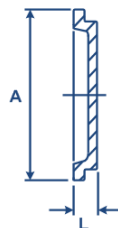
RJT PRESSED WELD LINER - 316 ST. ST.						
Dimension	1"	1.5"	2"	2 1/2"	3"	4"
A	41.1	54	66.7	79.4	92.1	117.5
B	25.4	38.1	50.8	63.5	76.2	101.6
L	12.7	12.7	12.7	12.7	12.7	12.7

SKU: HF1922



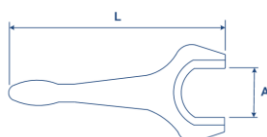
RJT JOINT RING - VARIOUS MATERIALS						
Dimension	1"	1.5"	2"	2 1/2"	3"	4"
A	33.3	46	58.7	71.4	84.1	109.7
B	6.6	6.6	6.6	6.6	6.6	6.6
Material	Nitrile, Viton, EPDM					

SKU: HF1925



RJT PRESSED BLANK LINER - 316 ST. ST.						
Dimension	1"	1.5"	2"	2 1/2"	3"	4"
A	41.3	54	66.7	79.4	92.1	117.5
L	8.7	8.7	8.7	8.7	8.7	8.7

SKU: HF4517



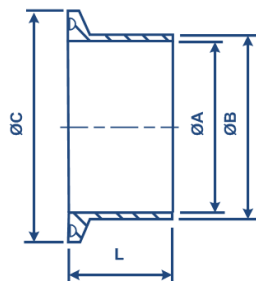
RJT CAST SPANNER - ALUMINIUM						
Dimension	1"	1.5"	2"	2 1/2"	3"	4"
A	51.8	66	80.4	93.2	106.3	121.5
L	240	288	300	326	440	448

NOTE

The dimensions listed are for guidance only. If dimensions are imperative please contact our technical department.

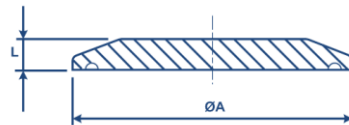
Hygienic / Sanitary Fittings Clamp Unions

SKU: HF1928



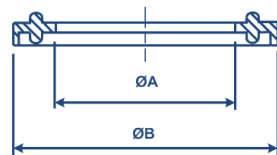
CLAMP FERRULE - 316L ST. ST.								
Dimension	1/2"	3/4"	1"	1.5"	2"	2 1/2"	3"	4"
A	9.4	15.75	22.1	34.8	47.5	60.2	72.9	97.4
B	12.7	19.05	25.4	38.1	50.8	63.5	76.2	101.6
C	25	25	50.5	50.5	64	77.5	91	119
L	21.5	21.5	21.5	21.5	21.5	21.5	21.5	21.5

SKU: HF1930



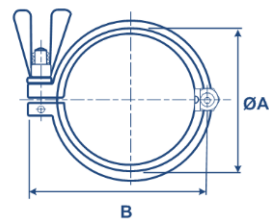
CLAMP BLANK - 316L ST. ST.								
Dimension	1/2"	3/4"	1"	1.5"	2"	2 1/2"	3"	4"
A	25	25	50.5	50.5	64	77.5	91	119
L	6	6	6.3	6.3	6.3	6.3	6.3	7.9

SKU: HF1933



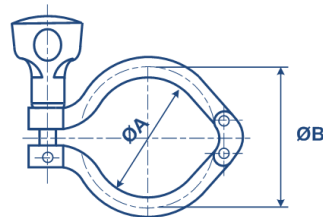
CLAMP JOINT RING - LIPPED								
Dimension	1/2"	3/4"	1"	1.5"	2"	2 1/2"	3"	4"
A	9.9	16.3	22.8	3.8	48.8	60.5	73.1	97.8
B	21.8	21.8	52.7	52.7	66.2	79.7	93.2	121.2
Material	EPDM, Viton, Silicone, PTFE (Solid), PTFE (Envelope)							

SKU: HF1929



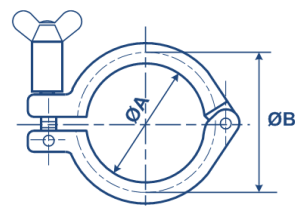
BSF TYPE CLAMP - 304 St.St.								
Dimension	1/2"	3/4"	1"	1.5"	2"	2 1/2"	3"	4"
A	28	28	53	53	67.4	80.9	94.4	122
B	47	47	85.5	85.5	99	112	128.5	157.5

SKU: HF



DOUBLE HINGED CLAMP - 304 St.St. (13mhhm)								
Dimension	1/2"	3/4"	1"	1.5"	2"	2 1/2"	3"	4"
A	20	20	43.6	43.6	57	70.6	84	112
B	28	28	53.6	53.6	67	80.6	94	112

SKU: HF



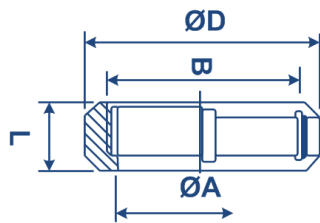
SINGLE HINGED CLAMP - 304 St.St.			
Dimension	6"	8"	10"
A	155.4	207.4	222.5
B	170.4	225.9	237.5

NOTE

The dimensions listed are for guidance only. If dimensions are imperative please contact our technical department.

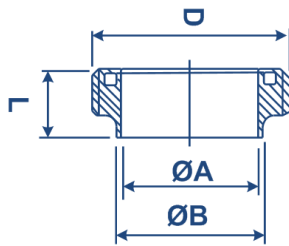
Hygienic / Sanitary Fittings SMS Unions

SKU: HF1918



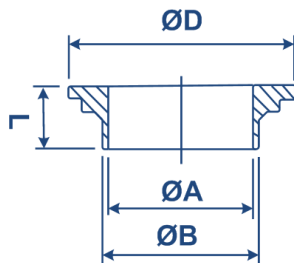
SMS ROUND SLOTTED NUT - 304 ST. ST.						
Dimension	1"	1.5"	2"	2 1/2"	3"	4"
A	32	48	60.5	74	87	113
B	RD40 *1/6	RD60 *1/6	RD700 *1/6	RD85 *1/6	RD98 *1/6	RD125 *1/6
D	51	74	84	100	114	138
L	19	23	24	28	30	31
SLOTS	6	6	6	6	6	6

SKU: HF1914



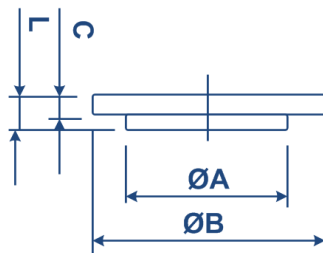
SMS WELD MALE - 316 ST. ST.						
Dimension	1"	1.5"	2"	2 1/2"	3"	4"
A	22.5	35.5	48.5	60.5	72.9	97.6
D	RD40 *1/6	RD60 *1/6	RD70 *1/6	RD85 *1/6	RD98 *1/6	RD125 *1/6
B	25	38	51	63.5	76.1	101.6
L	19	23	23	27	27	30

SKU: HF1910



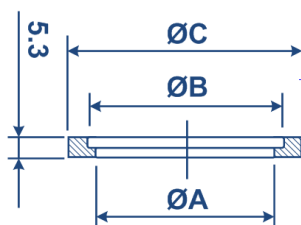
SMS WELD LINER - 316 ST. ST.						
Dimension	1"	1.5"	2"	2 1/2"	3"	4"
A	22.5	35.5	48.5	60.5	72.9	97.6
B	25	38	51	63.5	76.1	101.6
D	35.5	55	65	80	93	118
L	15.5	16	17	17	19	19

SKU: HF1926



SMS BLANK LINER - 316 ST. ST.						
Dimension	1"	1.5"	2"	2 1/2"	3"	4"
A	32	48	60	73.5	86	112
B	35.5	55	65	80	93	118
C	3.5	5	5	5	5	6
L	7.5	9	10	10	11	11

SKU: HF1921



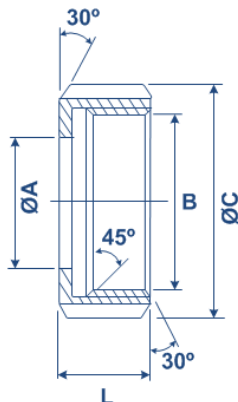
SMS JOINT RING - EPDM						
Dimension	1"	1.5"	2"	2 1/2"	3"	4"
A	22.8	35.8	48.8	61	73.4	100.5
B	25.1	38.1	51.1	63.6	76.1	104
C	38.1	47.8	60.8	73.3	85.8	115.7

NOTE

The dimensions listed are for guidance only. If dimensions are imperative please contact our technical department.

Hygienic / Sanitary Fittings DIN Unions

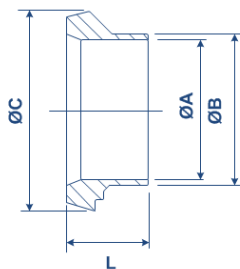
SKU: HF1916



DIN ROUND SLOTTED NUT - 304 ST. ST.

Dimension	1"	1.5"	2"	2 1/2"	3"	4"
A	36	49	62	80	94	114
B	RD52 X 1/6	RD65 X 1/6	RD78 X 1/6	RD95 X 1/6	RD110 X 1/4	RD130 X 1/4
C	63	78	92	112	127	148
L	21	21	22	25	29	31
SLOTS	4	4	4	4	6	6

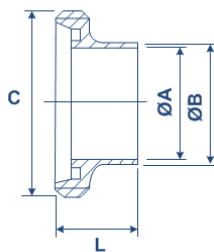
SKU: HF1908



DIN WELD MALE - 316 ST. ST.

Dimension	1"	1.5"	2"	2 1/2"	3"	4"
A	22.1	34.8	47.5	60.5	72.9	97.6
C	RD52 X 1/6	RD65 X 1/6	RD78 X 1/6	RD95 X 1/6	RD110 X 1/4	RD130 X 1/4
B	25.4	38.1	50.8	63.5	76.2	101.6
L	29	33	35	40	45	54

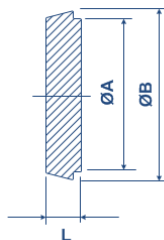
SKU: HF1912



DIN WELD LINER - 316 ST. ST.

Dimension	1"	1.5"	2"	2 1/2"	3"	4"
A	22.1	34.8	47.5	60.5	72.9	97.6
B	25.4	38.1	50.8	63.5	76.2	101.6
C	44	56	68.5	86	100	121
L	22	26	28	32	37	44

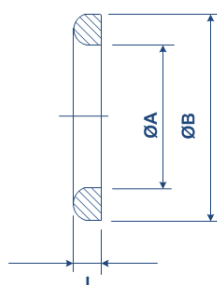
SKU: HF1924



DIN BLANK LINER- 316 ST. ST.

Dimension	1"	1.5"	2"	2 1/2"	3"	4"
A	35	48	61	79	93	114
B	44	56	68	86	100	121
L	13	13	14	16	16	20

SKU: HF1920



DIN JOINT RING- EPDM

Dimension	1"	1.5"	2"	2 1/2"	3"	4"
A	30	42	54	71	85	104
B	40	52	64	81	95	114
L	5	5	5	5	5	6

Hygienic Tube

Valves Online/Hygienic Select can offer a full and comprehensive range of **Stainless Steel Tube and Pipe work**.

Our Hygienic tube is manufactured to EN 10217-7 / EN 10357 (formally DIN11850) and is available from our extensive stocks in 316 grade stainless steel. Offered in dull polished or a de-scaled finish with the tube being weld bead removed for a crack and crevice free internal bore.

Polished tube is from 1/2" to 4" and supplied in individual plastic sleeves for on site cleanliness.

- Sizes 1/2" OD – 8" OD ex-stock
- Suitable for low pressure with a maximum of 150lbs
- Dull Polished or De-scaled finish
- Available in 316 grade
- Weld bead rolled for crevice free ID
- <0.80 Ra on the internal surface and <1.6 Ra on the internal weld bead, according to EN10357
- Certification can be supplied:- available on request

STANDARD

1/2" - 1" Manufactured to EN10217-7

1.5" - 8" Manufactured to DIN 11850/EN10357

Non Annealed

NOTE

The dimensions listed are for guidance only. If dimensions are imperative please contact our technical department.

Hygienic Tube

316L Grade Tube in 6 Mtr. Lengths			
SIZE	mm	316L Brushed	316L Descaled
1/2" x 1.5"	12.7 x 1.5	✓	
3/4" x 1.5"	19.05 x 1.5	✓	
1" x 1.5"	25.4 x 1.5	✓	✓
1.25" x 1.5"	32 x 1.5	✓	
1.5" x 1.5"	38.1 x 1.5	✓	✓
2" x 1.5"	50.8 x 1.5	✓	✓
2.5" x 1.5"	63.5 x 1.5	✓	✓
3" x 1.5"	76.2 x 1.5	✓	✓
4" x 1.5"	101.6 x 1.5	✓	✓
4" x 2"	101.6 x 2	✓	
5" x 2"	129 x 2	✓	
6" x 2"	154 x 2	✓	
8" x 2"	204 x 2	✓	

STANDARD

1/2" - 1" Manufactured to EN10217-7

1.5" - 8" Manufactured to DIN 11850/EN10357

Non Annealed

Hygienic Technical

Seal Material Technical Data			
Material	Description	Resistance	Temperature
Ethylene propylene diene rubber	EPDM	Good Resistance. Unsatisfactory for oils and fats	-20°C to 120°C
Fluorine rubber	FKM VITON	Good Chemical Properties	0°C to 120°C
Nitrile rubber	NBR	Good Resistance on Oils and Fats	-10°C to 80°C
Poly tetrafluorethylene	PTFE	Resistant to nearly all chemicals	-20°C to 180°C
Silicone		Good General Resistance poor on Alkali	-20°C to 180°C

NOTE

The dimensions listed are for guidance only. If dimensions are imperative please contact our technical department.