

FLANGED PN16 CAST IRON

METAL SEATED SWING CHECK VALVE

An economy swing check valve with the following key features:

- Cast iron body
- Metal seated
- Sizes available: 2" to 8"
- Flanged to suit PN16
- Low cost



DETAILS

An economy swing check valve offering excellent sealing capabilities for both high and low pressures.

This valve features a cast iron body, a metal-seat and fits PN16 flanges.

Available in sizes: 2" to 8"

Suitable for general purpose, industrial and HVAC applications which include water, heating, air-conditioning plants and compressed air systems.

An economical, reliable cast iron check valve.

FLANGED PN16 CAST IRON

METAL SEATED SWING CHECK VALVE

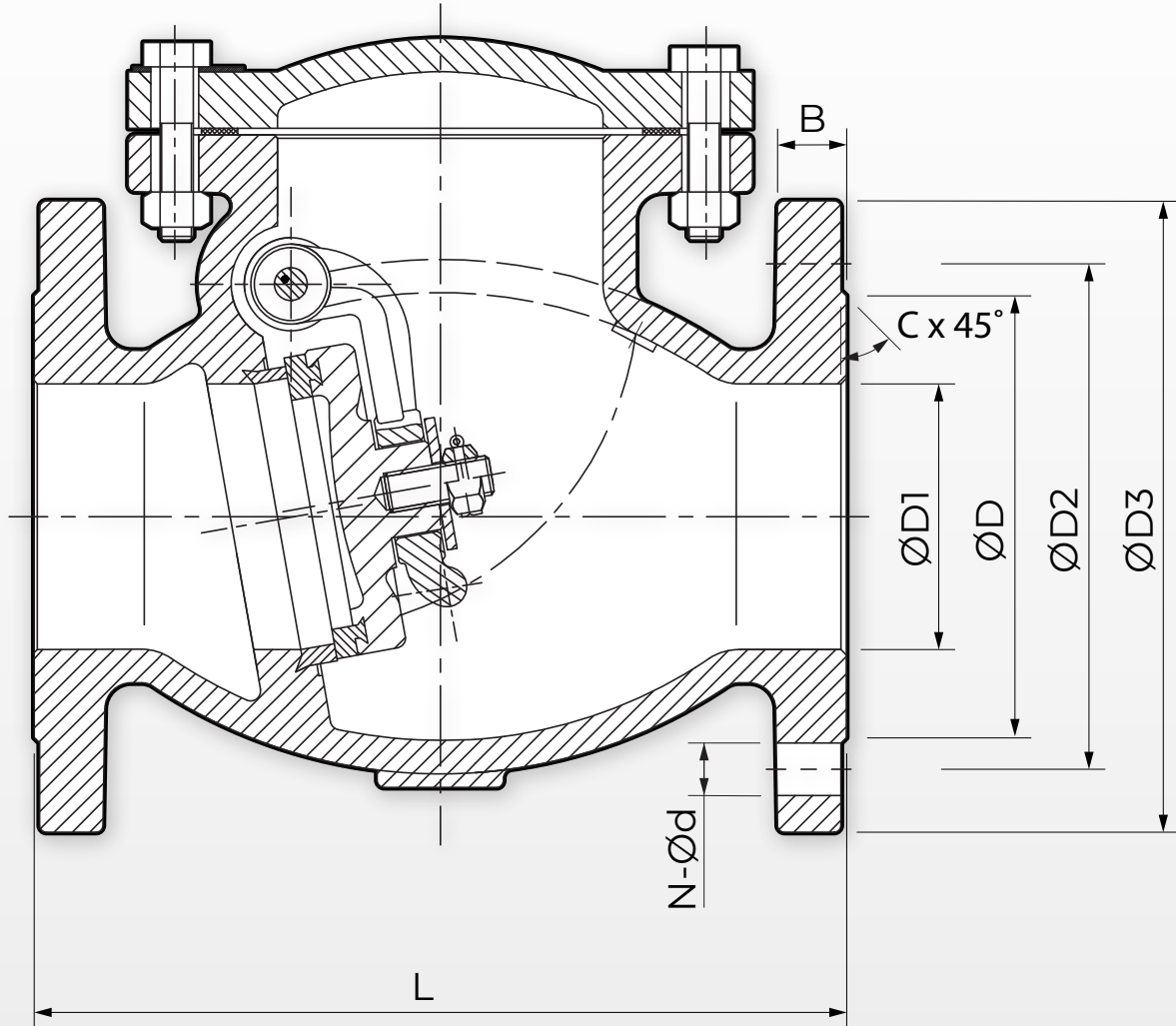


TABLE 1: DIMENSIONS IN MM

SIZE	L	D1	D2	D3	B	N-Ød	D	C	WEIGHT	PART NUMBER
DN50	203	51	125	165	20	4-Ø19	99	3	11.5 kg	CV4685-100401
DN65	216	65	145	185	20	4-Ø19	118	3	15.0 kg	CV4685-100402
DN80	241	80	160	200	22	8-Ø19	132	3	19.0 kg	CV4685-100403
DN100	292	102	180	220	24	8-Ø19	156	3	27.0 kg	CV4685-100404
DN125	330	127	210	250	26	8-Ø19	184	3	46.0 kg	CV4685-100405
DN150	356	152	240	285	26	8-Ø23	211	3	52.0 kg	CV4685-100406
DN200	495	203	295	340	30	12-Ø23	266	3	72.0 kg	CV4685-100407

FLANGED PN16 CAST IRON

METAL SEATED SWING CHECK VALVE

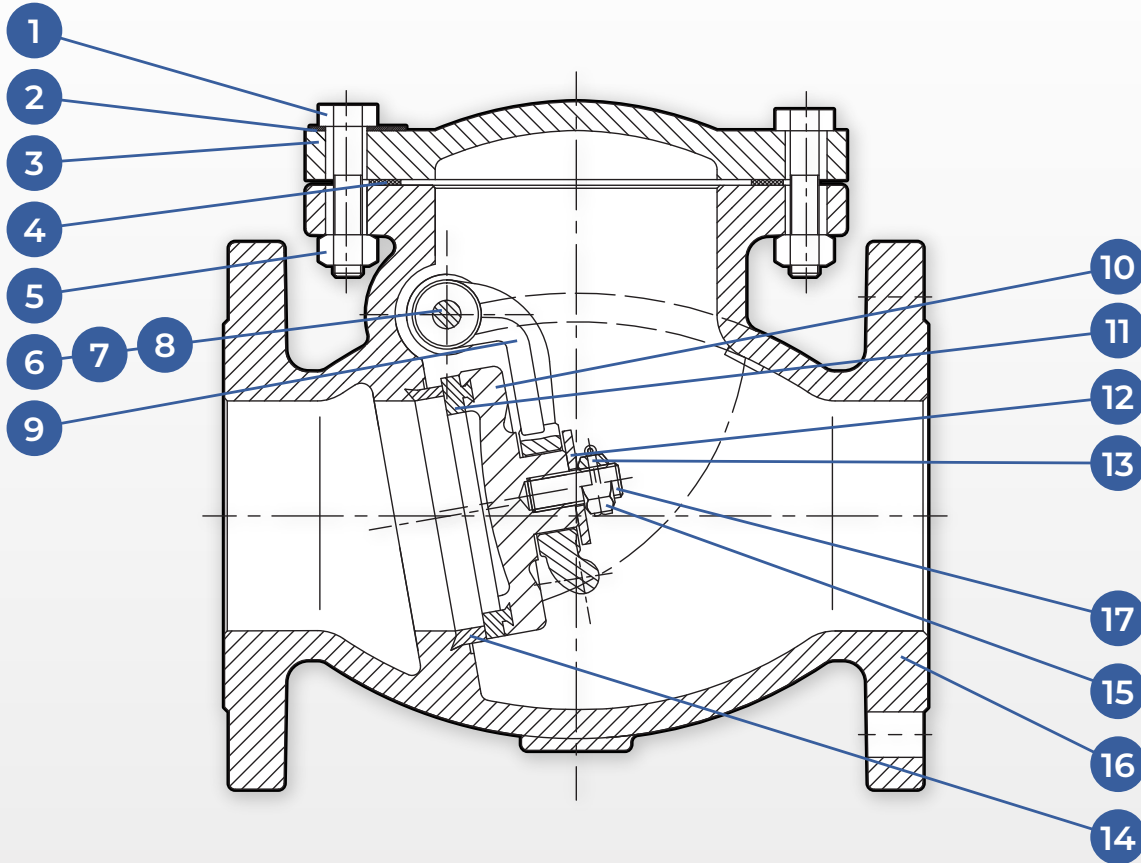


TABLE 2: MATERIALS

NO.	PART NAME	MATERIAL	MATERIAL STANDARD
1	Bolts	Steel	ASTM A307 B
2	Name Plate	A1	-
3	Bonnet	Cast iron	ASTM A126 B
4	Body gasket	Graphite	Non-asbestos
5	Nuts	Steel	ASTM A307 B
6	Hinge pin plug	Steel	ASTM A307 B
7	Gasket	PTFE	Non-asbestos
8	Hinge pin	Stainless steel	ASTM 304
9	Hinge	Ductile iron	ASTM A536 65-45-12
10	Disc	Cast iron	ASTM A126 B
11	Disc ring	Cast bronze	ASTM B62
12	Washer	Steel	ASTM A307 B
13	Split pin	Stainless steel	ASTM A420 S42000
14	Seat ring	Cast bronze	ASTM B62
15	Nut	Steel	ASTM A307 B
16	Body	Cast iron	ASTM A126 B
17	Bolt	Steel	ASTM A307 B