





SKU: CV5182

-  VOLT Swing Check Valve EPDM Seat Lever & Weight – PN16
-  VOLT Rückschlagklappe EPDM Sitz Hebel und Gewicht - PN16
-  VOLT Oscilación válvula de retención EPDM Asiento Palanca y peso - PN16
-  VOLT Balançoire Clapet EPDM levier du siège et poids - PN16

Valves[™]
O N L I N E

- 2" - 12" Swing Check Valve Lever & Weight - PN16 – EPDM Seat
- 2" - 12" Rückschlagklappe Hebel und Gewicht - PN16 - EPDM Sitz
- 2" - 12" Oscilación válvula de retención Palanca y peso - PN16 - EPDM Asiento
- 2" - 12" Balançoire Clapet levier et poids - PN16 - EPDM Siège

Cast Iron Swing Check Valve – Lever & Weight



Description

Flanged PN16 Cast Iron Swing Check Valve with Lever and Weight. EPDM Seal. PN16 Flanges. Temperature -10°C to 120°C



Beschreibung

Mit Flansch PN16 Gusseisen Rückschlagklappe mit Hebel und Gewicht . EPDM -Dichtung . PN16 Flansche . Temperatur -10 ° C bis 120 ° C



Descripción

Con bridas PN16 Hierro fundido swing válvula de retención con palanca y peso . Sello EPDM . Bridas PN16 . Temperatura -10°C a 120°C




Description

Brides PN16 Fonte Balançoire Clapet avec levier et poids . Joint EPDM . Brides PN16 . Température -10°C à 120°C

- **PN16 Rated**
- **-10°C to 120°C**
- **Fluids: Water, Sewage and Sludge**
- **Easy to Install**

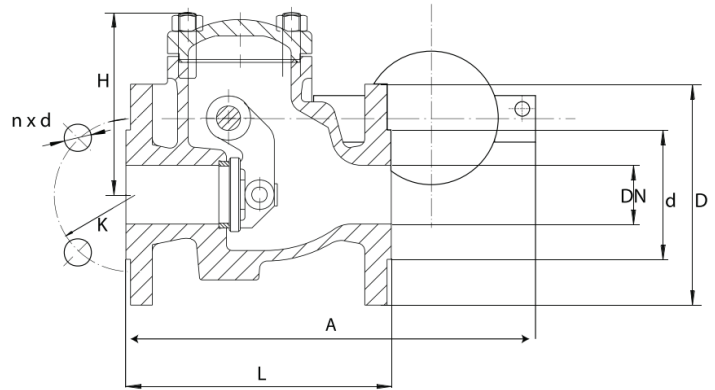
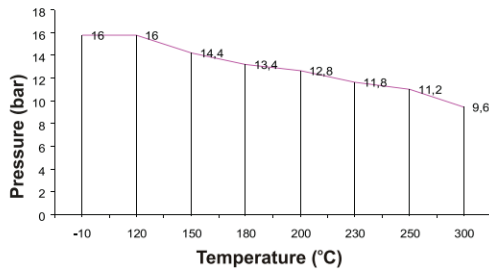
Description:

A metal swing check valve with counterweight flanged PN16 for water, sewage and media with sludge. Cast iron body, EPDM soft seat to give a good tightness at low differential pressure. The valve is full bore and has an adjustable counterweight.

-  VOLT Swing Check Valve EPDM Seat Lever & Weight – PN16
-  VOLT Rückschlagklappe EPDM Sitz Hebel und Gewicht - PN16
-  VOLT Oscilación válvula de retención EPDM Asiento Palanca y peso - PN16
-  VOLT Balançoire Clapet EPDM levier du siège et poids - PN16

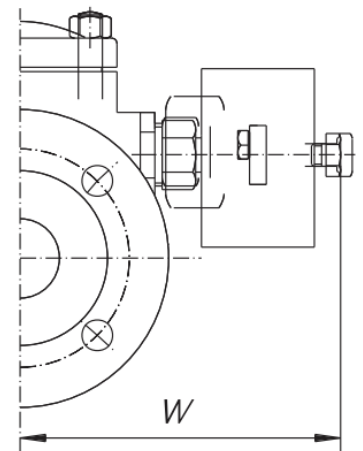
Swing Check Valve with Lever & Weight – PN16

Pressure / Temperature



Material List

Item	Description	Material
1	Body	En-GJL-250
2	Cover Gasket	EPDM
3	Bow	EPDM
4	Flap	En-GJL-250
5	Bolt	8.8 A2A
6	Bearing Sleeve	8"-12" Brass
7	Hanger	En-GJL-250
8	Gasket	EPDM
9	Inspection Cover	En-GJL-250
10	Washer	Carbon Steel
11	Split Pin	X5CrNi18-10
12	Cover Gasket	Graphite



Dimensions

DN	Size	L	D	d	K	n x d	H	A	W	KG
50	2"	200	165	99	125	4 X 19	120	350	180	13.5
65	2 1/2"	240	185	111	145	4 X 19	141	352	190	18
80	3"	260	200	132	160	8 X 19	168	359	200	23.5
100	4"	300	220	156	180	8 X 19	175	371	210	36
125	5"	350	250	184	210	8 X 19	199	447	225	51
150	6"	400	285	211	240	8 X 23	217	466	250	67
200	8"	500	340	266	295	12 X 23	277	574	306	129
250	10"	600	405	319	355	12 X 28	337	662	348	198
300	12"	700	460	370	410	12 X 28	850	850	348	285