

## ANSI 150LB Slip-On Flange Stainless Steel (316L & 304)

- Sizes ½" to 12" (DN15 – DN300)
- BS EN 10204 3.1B Certificates Available
- Bolts and Gaskets Supplied to Suit
- 316L and 304 Options
- Raised Face

### > Description

An ANSI 150LB raised face, stainless steel, slip-on flange, conforming to ANSI/ASME B16.5. Available in 316L or 304L. Full material traceability and BS EN 10204 3.1B certification can be provided upon request.

Bolt kit sizes shown in the table are for bolting two flanges together including the thickness of a gasket. If using a wafer pattern valve, longer bolts will be required.

Bolt kits including gaskets can be supplied.

### > Benefits

- Sizes ½" to 10" with larger on request
- Bolts and gaskets are readily available
- Full range of
- Slip On Flange & Blind Flange
- Weld Neck and Threaded Flange
- To ANSI/ASME B16.5 Standards



### Description

A Stainless Steel ANSI 150LB slip-on flange for welding, offered in either 316L or 304L, conforming to ANSI/ASME B16.5. Sizes from ½" (DN15) to 12" (DN300). Full traceability and 3.1B certificates can be provided.



### Beschreibung

Ein Aufsteckflansch aus Edelstahl ANSI 150LB zum Anschweißen, angeboten in 316L oder 304L, entspricht ANSI/ASME B16.5. Größen von ½" (DN15) bis 12" (DN300). Vollständige Rückverfolgbarkeit und 3.1B-Zertifikate können bereitgestellt werden.



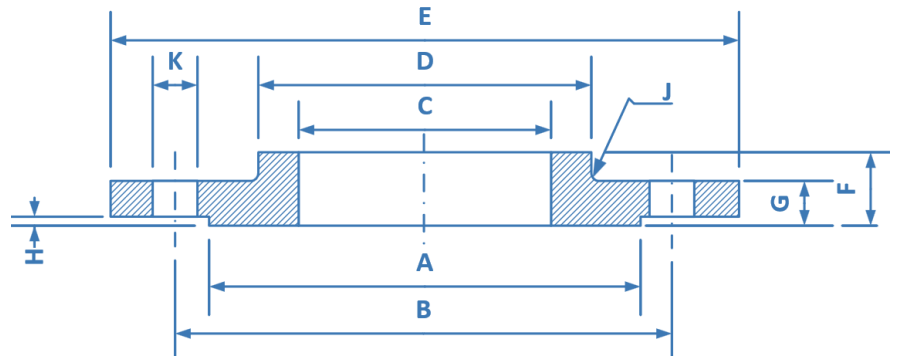
### Descripción

Brida deslizante de acero inoxidable ANSI 150LB para soldadura, disponible en 316L o 304L, conforme a ANSI/ASME B16.5. Tamaños desde ½" (DN15) hasta 12" (DN300). Se pueden proporcionar trazabilidad completa y certificados 3.1B.



### Description

Une bride à enfiler en acier inoxydable ANSI 150LB pour le soudage, proposée en 316L ou 304L, conformément à la norme ANSI/ASME B16.5. Tailles de ½" (DN15) à 12" (DN300). Une traçabilité complète et des certificats 3.1B peuvent être fournis.



## ANSI 150LB Slip-On Flange Stainless Steel (316L & 304)

Pipe Size	DN	Code 316	Code 304	A	B	C	D	E	F	G	H	J	K	Bolt	Kg	Bolt Kit Code
1/2"	15	F150S0.5	F150S.5-304	34.9	60.3	22.3	30.2	88.9	15.9	11.1	1.6	3	15.9	4XM12	0.4	BKO2
3/4"	20	F150S0.75	F150S.75-304	42.9	69.8	27.7	38.1	98.4	15.9	12.7	1.6	3	15.9	4XM12	0.7	BKO3
1"	25	F150S1.0	F150S1.0-304	50.8	79.4	34.5	49.2	107.9	17.5	14.3	1.6	3	15.9	4XM12	0.8	BKO3
1 1/4"	32	F150S1.25	F150S1.25-304	63.5	88.9	43.2	58.7	117.5	20.6	15.9	1.6	3	15.9	4XM12	1.1	BKO3
1 1/2"	40	F150S1.50	F150S1.50-304	73	98.4	49.5	65.1	127	22.2	17.5	1.6	3	15.9	4XM12	1.4	BKO3
2"	50	F150S2.0	F150S2.0-304	92.1	120.6	62	77.8	152.4	25.4	19	1.6	3	19	4XM16	2.2	BKO4
2 1/2"	65	F150S2.5	F150S2.5-304	104.8	139.7	74.7	90.5	177.8	28.6	22.2	1.6	3	19	4XM16	3.6	BKO6
3"	80	F150S3.0	F150S3.0-304	127	152.4	90.7	107.9	190.5	30.2	23.8	1.6	3	19	4XM16	4.1	BKO6
4"	100	F150S4.0	F150S4.0-304	157.2	190.5	116.1	134.9	228.6	33.3	23.8	1.6	3	19	8XM16	5.6	BKO7
5"	125	F150S5.0	F150S5.0-304	185.7	215.9	143.8	163.5	254	36.5	23.8	1.6	6.5	22.2	8XM20	6.3	BK10
6"	150	F150S6.0	F150S6.0-304	215.9	241.3	170.7	192.1	279.4	39.7	25.4	1.6	6.5	22.2	8XM20	7.5	BK10
8"	200	F150S8.0	F150S8.0-304	269.9	298.4	221.5	246	343	44.5	28.6	1.6	6.5	22.2	8XM20	12.6	BK12
10"	250	F150S10.0	F150S10.0-304	323.8	362	276.4	305	406	49.2	31.8	1.6	6.5	25.4	12XM22	18.5	BK13
12"	300	NA	F150S12.0-304	381	431.8	327.2	365.3	482.6	55.6	31.8	1.6	6.5	25.4	12XM22	26.6	BK13



➤ Other Flanges in Stock

➤ Gaskets and Bolt Sets

