



150LB Blank Flange in 316L Stainless Steel

- Sizes ½" to 10" (DN15 – DN250)
- BS EN 10204.3.1B Certificates Available
- Bolts and Gaskets Supplied to Suit
- 316L Stainless Steel
- Raised Face

> Description

A 316L ANSI class 150LB raised face blind or blank flange, conforming to ANSI/ASME standards standard.

Available with full material traceability and 3.1B certification upon request.

Bolt kit sizes shown in the table are for bolting two flanges together including the thickness of a gasket. If using a wafer pattern valve, longer bolts will be required.

> Benefits

Sizes ½" to 10"
316L Stainless steel
Raised Face



Description

A 316L Stainless Steel Class 150LB Blank/Blind flange with raised face, conforming to ANSI/ASME standards. Sizes from ½" (DN15) to 10" (DN250). Full traceability and 3.1B certificates can be provided.



Beschreibung

Ein Blind-/Blindflansch aus Edelstahl 316L der Klasse 150LB mit erhöhter Dichtfläche, der den ANSI/ASME-Normen entspricht. Größen von ½" (DN15) bis 10" (DN250). Vollständige Rückverfolgbarkeit und 3.1B-Zertifikate können bereitgestellt werden.



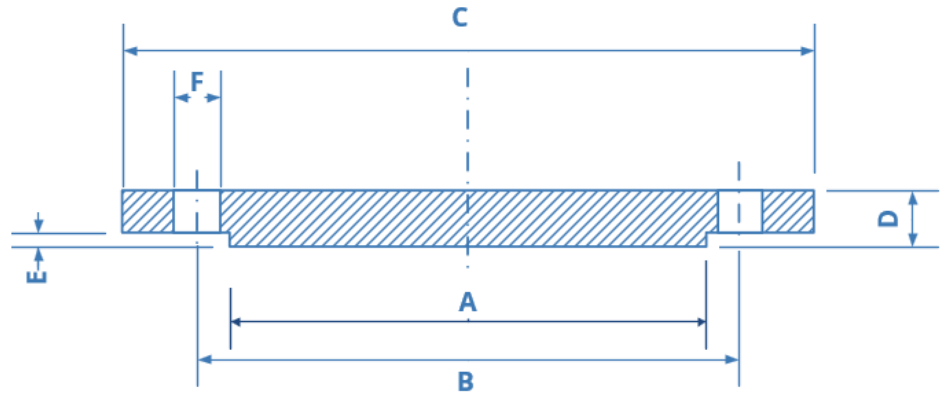
Descripción

Brida ciega/ciega de acero inoxidable 316L Clase 150LB con cara elevada, conforme a las normas ANSI/ASME. Tamaños desde ½" (DN15) hasta 10" (DN250). Se pueden proporcionar trazabilidad completa y certificados 3.1B.



Description

Une bride pleine/aveugle en acier inoxydable 316L classe 150LB avec face surélevée, conforme aux normes ANSI/ASME. Tailles de ½" (DN15) à 10" (DN250). Une traçabilité complète et des certificats 3.1B peuvent être fournis.



Class 150LB Blind/Blank Flange in 316L

Pipe Size	DN	Code 316	Code 304	A	B	C	D	E	F	Bolt	KG	Bolt Kit
1/2"	15	F150B0.5	F150B0.5-304	34.9	60.3	88.9	11.1	1.6	15.9	4 x M12	0.4	BK02
3/4"	20	F150B0.75	F150B0.75-304	42.9	69.8	98.4	12.7	1.6	15.9	4 x M12	0.7	BK03
1"	25	F150B1.0	F150B1.0-304	50.8	79.4	107.9	14.3	1.6	15.9	4 x M12	0.9	BK03
1 1/4"	32	F150B0.25	F150B0.25-304	63.5	88.9	117.5	15.9	1.6	15.9	4 x M12	1.3	BK03
1 1/2"	40	F150B1.5	F150B1.5-304	73	98.4	127	17.5	1.6	15.9	4 x M12	1.6	BK03
2"	50	F150B2.0	F150B2.0-304	92.1	120.6	152.4	19	1.6	19	4 x M16	2.6	BK04
2 1/2"	65	F150B2.5	F150B2.5-304	104.8	139.7	177.8	22.2	1.6	19	4 x M16	4.1	BK06
3"	80	F150B3.0	F150B3.0-304	127	152.4	190.5	23.8	1.6	19	4 x M16	5	BK06
4"	100	F150B4.0	F150B4.0-304	157.2	190.5	228.6	23.8	1.6	19	8 x M16	7.1	BK07
5"	125	F150B5.0	F150B5.0-304	185.7	215.9	254	23.8	1.6	22.2	8 x M20	9	BK10
6"	150	F150B6.0	F150B6.0-304	215.9	241.3	279.4	25.4	1.6	22.2	8 x M20	11.8	BK10
8"	200	F150B8.0	F150B8.0-304	269.9	298.4	343	28.6	1.6	22.2	8 x M20	21	BK12
10"	250	F150B10.0	F150B10.0-304	323.8	362	406	31.8	1.6	25.4	12 x M22	30	BK13
12"	300	F150B12.0	F150B12.0-304	381	431.8	482.6	31.8	1.6	25.4	12 x M22	47	BK13



➤ **Other Flanges in Stock**

➤ **Gaskets and Bolt Sets**

